



FAXE PRESENTATION

OUR VISION AND MISSION



OUR VISION AND GOAL IS TO BE BRAZIL'S # **1** ONSHORE DRILLING CONTRACTOR!



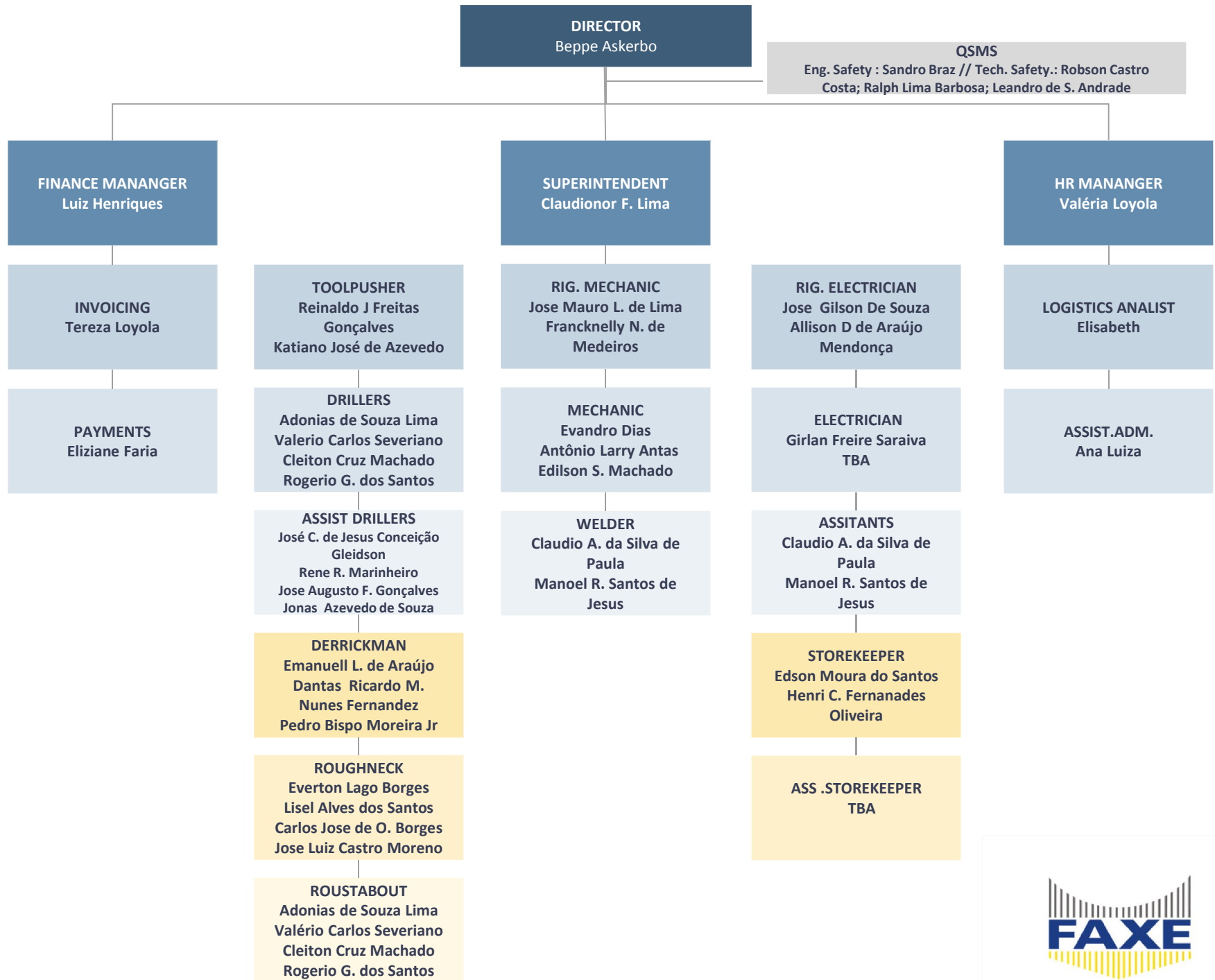
Reach highest profitability possible for shareholders through top management and owner engagement in:

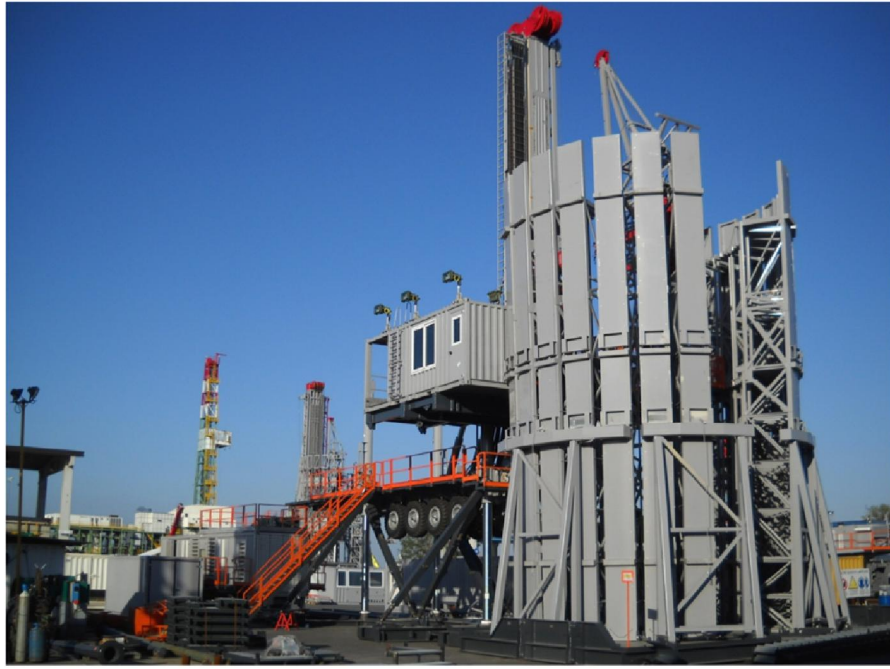
- Dayrates with a an real added value to our customers
- High rates of uptime
- Maintain a low cost budget



OUR TEAM







OUR TWO RIGS



OUR EQUIPMENTS



MAIN EQUIPMENTS – HH 300

- Topdrive Drillmec
- Iron roughneck Drillmec
- Automatic Pipehandler Drillmec
- 2 x Mudpumps Drillmec 12T1600 (1600hp/dc)
- 3 x Gensets Caterpillar sound attenuated 3512b
- Spherical/Anular BOP Shaffer 13 5/8 5000 psi
- Double & Single BOP Cameron 13 5/8 5000 psi
- 3 x Shakers MISwaco Mongoose PT
- 1500 GPM atmospheric degasser & 1200 GPM vacuum degasser
- Power control room AETI (DC drives, MCCs, Generator controls, soft starters)
- 1000 bbls mud tank system
- Drill Pipe. 5" – 13.000 ft. Grade S 135 - RANGE 3 w/ hardbanding and TK34 internal coating

MODEL	TYPE	HH300
Input power	Kw (Hp)	1542 (1150)
Static hook load capacity	lbs (metric ton)	600, 000 (272)
Max pull down	lbs (metric ton)	66, 000 (30)
Max height from ground level	ft (m)	102, 7 (31, 3)
Clear height from rt level	ft (m)	52, 5 (16)
Rt rated capacity	lbs (metric ton)	600, 000 (272)
Capacity	lbs (metric ton)	600000 (272)
RPM Max	N	200
Max torque	ft lbs (daNm)	38521 (5223)
Line	N	4
Nominal diameter	mm	42
Breaking strenght	lbs (metric ton)	376875 (171)
DP 31/2'	ft (m)	15170 (4624)
DP 5"	ft (m)	12040 (3670)
DC	ft (m)	630 (192)

ADVANTAGES HH 300 VS CONVENTIONAL

- ❑ HH rigs are smaller than conventional rigs of same capacity, meaning smaller footprint, faster rig move = less cost per well to customer
- ❑ HH rigs are highly automated, with an “unmanned” rigfloor and derrick, means reduced safety risks and reduced manpower costs to owner

